

## TESTING THE PEMF

You will notice that you've received a 'key ring' item with your system. This is your tool to 'test' the PEMF output of the system.



Once you turn the rug on, you can hang the metal square by a module and watch it 'pulse' in time with the rug.

This is a great way to visually test the units. The team at Animal Therapeutics Online have tested each of your system's units prior to dispatch to ensure they are all working.

## CONTROLLER BOX

Check the top of your controller box - take note of the connector (pictured), and the arrow. To remove / insert the connector, be sure to hold the sleeve, and ensure the arrow lines are aligned perfectly. No force is necessary to insert or remove the plug, it should be smooth and easy. If force is required, it is not aligned correctly, and any damage will void your warranty.



## The Animal Therapeutics team is here to help you

Do you have any questions on our products or want to learn more about setting up a custom therapy system?

Just call **+61 8 7071 7168** or send an email to **info@animaltherapeutics.com.au**.

## YOUR BATTERY

When dispatching your system, we have already made sure that your battery is charged and ready for use.

The battery range is from 10 - 13. A reading of 12.3 is the perfect 'full' operating level for your system. You won't damage the battery by charging it when it's not completely flat, so pop it on charge as often as is convenient.



You may damage the battery if you attempt 'drain' the battery by turning it back on once it's gone flat. Your battery will last for approximately 20 treatments.

## WASHING THE RUG

Washing your Activo Med rug can seem like a big task, you don't want to damage the high end technology. That's why we've created a handy step by step guide for washing your rug.

Just send an email to **info@animaltherapeutics.com.au** and we can send you a copy.

# ACTIVO MED THERAPY SYSTEM

## Introductory Guide



## CONGRATULATIONS ON CHOOSING AN ACTIVO MED THERAPY SYSTEM!

This simple user guide will enable you and your horse to get started quickly and easily with your Activo Med therapy system.



# GETTING STARTED

## UNFOLDING YOUR RUG FOR THE FIRST TIME

When you receive your system, you will notice that the rug is folded in a certain way. The Animal Therapeutics team ensures that the rug is dispatched to you so that you can pull the rug out of the bag and place it directly on the horse. When returning the rug to the bag, simply reverse these steps.



**A** Remove the rug from the bag.



Take note of which side the surcingles are, these go on the off side of the horse.

**B** Place rug on horse's back where the saddle would go.



**C** Unfold across horse's body.



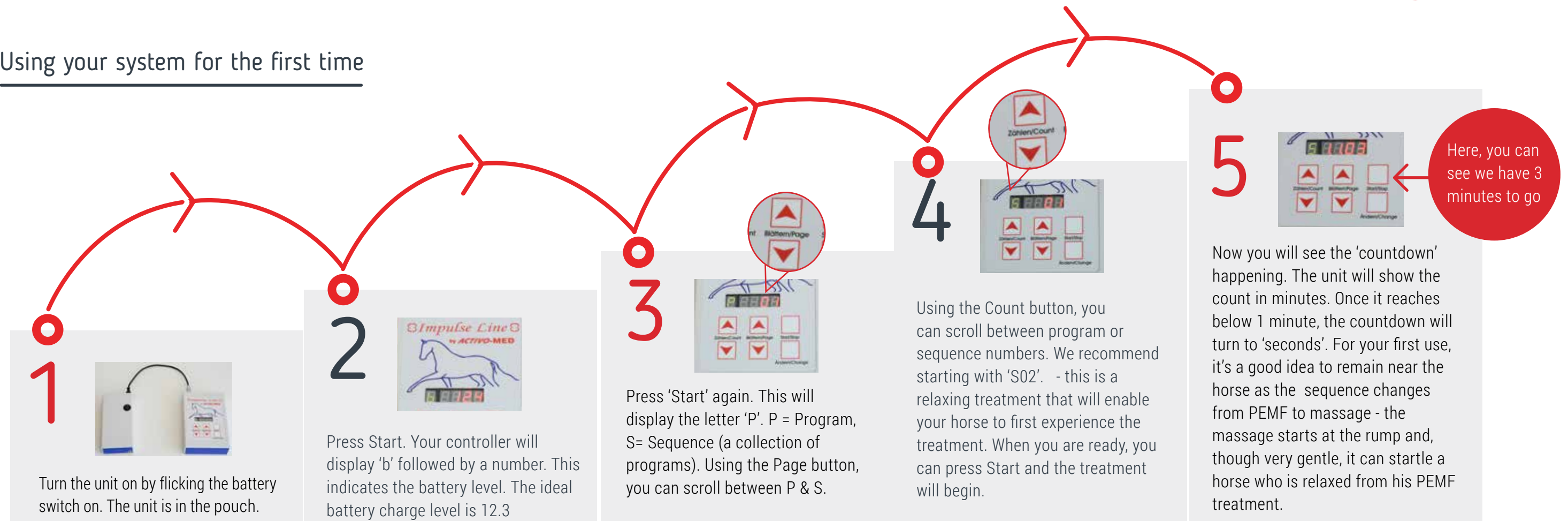
**D** Buckle up the clips, crossover surcingles, do up chest straps.



**E** Connect battery and rug to controller. Secure to velcro. *See back page for more information on your controller.*



## Using your system for the first time





## WASHING YOUR ACTIVO MED RUG

- 1** Remove controller. Lay rug flat and open your rug with the Velcro along the topline.
- 2** Now remove the inner panels from the rug by separating the velcro. Stack the panels in order as you go to make it easier.
- 3** When all panels are removed, you can wash the outer layer of your rug in a non-allergenic gentle detergent, either by hand or on a gentle machine cycle. **Do not wash the controller or the components you have removed.**
- 4** Once dry, you can now re-assemble your panels. Ensure the larger panels are aligned to the shoulder and stifle.
- 5** Once all panels are re-attached, close the topline Velcro, taking care to leave the controller cord free.

## YOUR ACTIVO MED SETTINGS EXPLAINED

### TIME (t)

Is the time for the program to run in minutes. It can be set between 1 and 99 minutes.

8 8 8 8 5

### INTENSITY OF MASSAGE (h)

Is the intensity of the massage vibration. It can be set between 1 and 10. This should be set to 0 for a PEMF only program.

8 8 8 8 0

### FREQUENCY (f)

Is the frequency of the PEMF treatment and can be set between 1 & 50 Hertz. This should be set to OFF for a Massage only program.

8 8 8 8 0

### INTENSITY (I)

Is the intensity of the PEMF treatment and can be set between 1 and 10.

8 8 8 8 0

### POLARITY (c)

The polarity can be adjusted, however this is not recommended for standard use. Some horses respond to lower settings when they are more sore. **Please speak to us for advice on adjusting this setting.**

8 8 8 8 0

### LASER (L)

This is the strength of the light/laser therapy. It can be set between 1 and 15, and should be set to OFF for non-laser units.

8 8 8 8 8

### DURATION (d)

Is the duration per line for Massage, and can be set between 1 and 25 seconds. It can also be set 'On' to make all massage lines vibrate at once. This should be set to Off when using PEMF-only or laser.

8 8 8 8 4



# ACTIVO MED THERAPY SYSTEM

## Advanced Guide



## CONGRATULATIONS ON CHOOSING AN ACTIVO MED THERAPY SYSTEM!

This Advanced User Guide will enable you to utilise the full suite of custom options available with the Activo Med Therapy System and enable you to setup programs to suit your horses' needs.





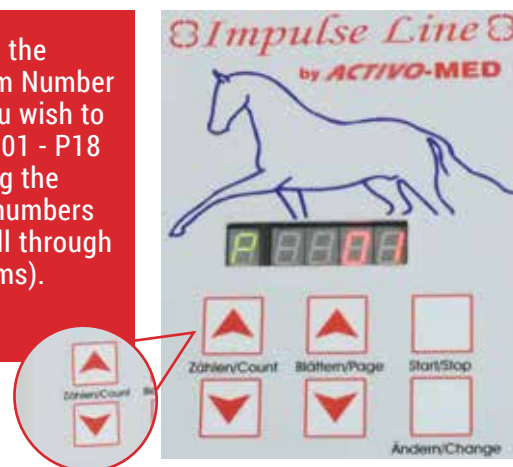
# CUSTOMISING YOUR SYSTEM

## Use these steps to change the parameters (t,h,f,l,c,L,d) in your programs

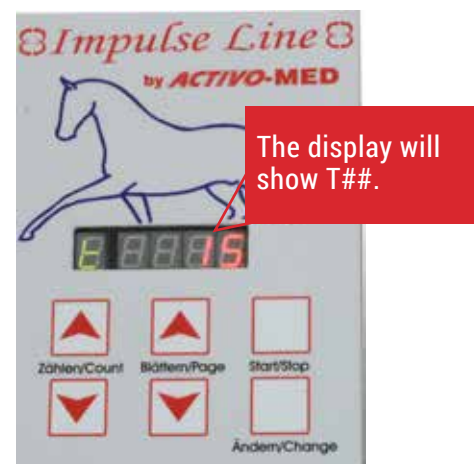
See back page for more information on the parameters.

**A** Switch on, press start and P01 will show on the display.

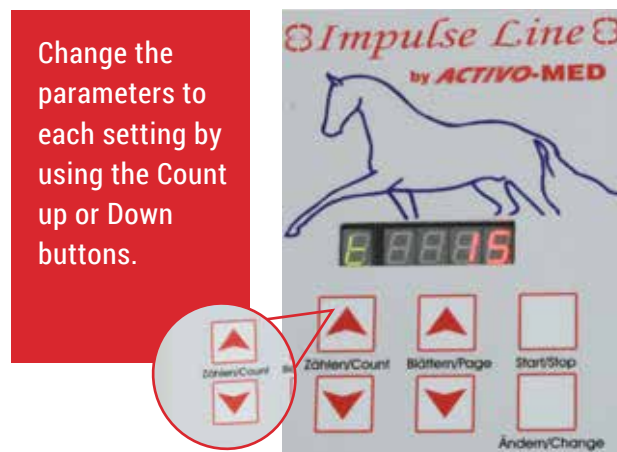
Choose the program Number that you wish to alter (P01 - P18 by using the Count numbers to scroll through programs).



**B** Press the Change Button. You are now in the 'Change' mode of your selected program.



**C** Press the Page Up button to select settings t/F/I/L/d. Choose the setting you wish to change.



**D** Continue to change all parameters as required. Press 'Change' again to store all your new programs.



Note: All sequences that refer to this program will now be adjusted.

## Use these steps to change your sequences

A sequence is a combination of programs

